

# UPHOLSTERY FABRICS

by Gabriel



# Focus Melange

Price category 2



66211



60310



62117



66219



60311



63112



66210



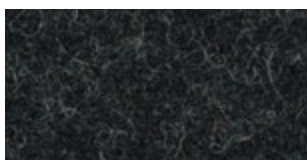
60900



64242



68234



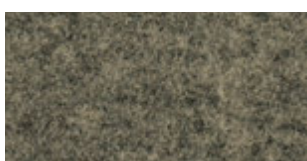
60099



66223



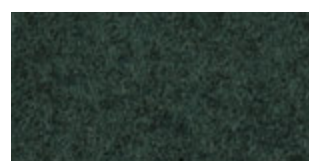
68248



61241



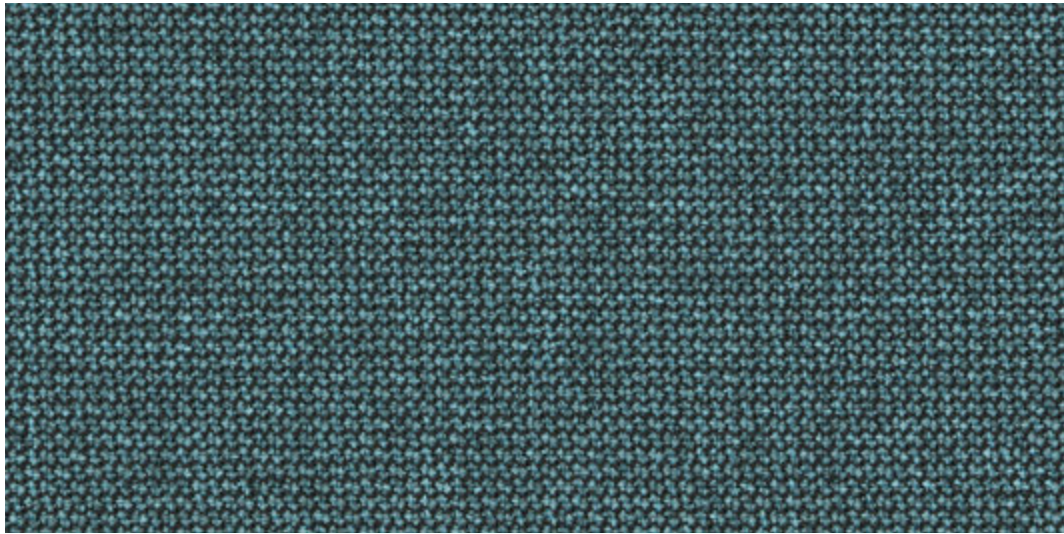
66224



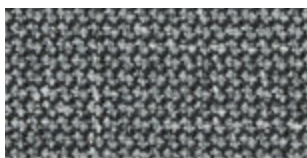
68249

# Renewed Loop

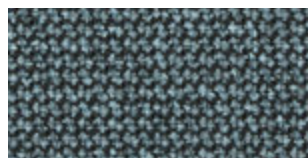
Price category 1



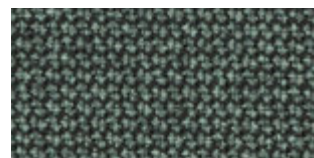
67131



60339



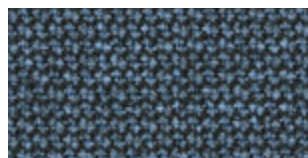
66254



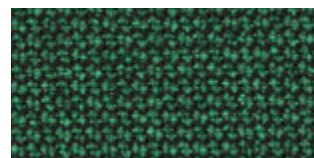
68291



60342



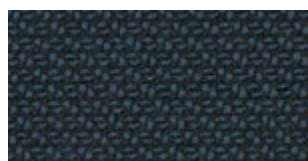
66255



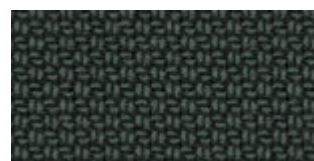
68294



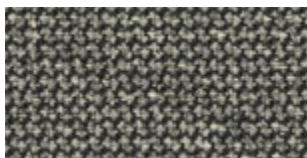
61280



66257



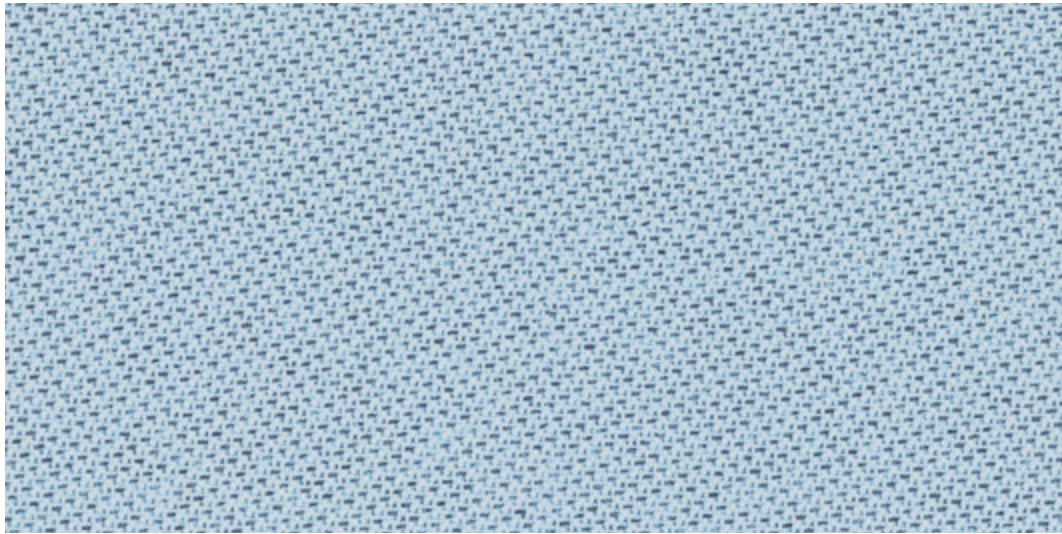
68296



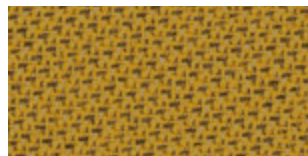
61281

# Tonal

Price category 1



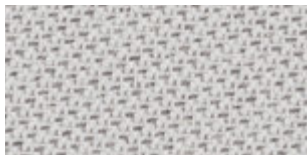
66184



62057



66183



60122



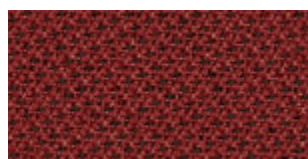
64207



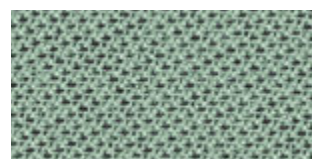
66286



60123



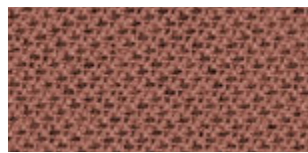
64209



67089



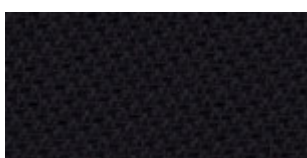
61182



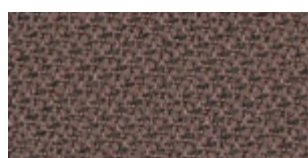
64210



68277



60999



64211



68206

# SPECIFICATIONS

	Focus Melange	Renewed Loop	Tonal
<b>Application</b>	Upholstery	Upholstery Panel Screen	Upholstery Panel Screen
<b>Composition</b>	100% New Zealand wool	100% post-consumer/ postindustrial recycled polyester (contains 3-10% textile waste)	100% post-consumer recycled polyester
<b>Weight</b>	21.29 oz/lin.yd. 660 g/lm	11.93 oz/lin.yd. 370 g/lm	10.26 oz/lin.yd. 315 g/lm
<b>Width</b>	55" 140 cm	55" 140 cm	55" 140 cm
<b>Abrasion</b>	60,000 Martindale (ASTM D4966) 100,000 Martindale (EN ISO 12947-2)	100,000 Wyzenbeek 100,000 Martindale	100,000 Wyzenbeek 100,000 Martindale
<b>Pilling</b>	4	4-5	4-5
<b>Light fastness</b>	5-7	7-8	6-8
<b>Rubbing fastness</b>	4-5/4-5	4-5/4-5	4-5/4-5
<b>US ACT</b>	<ul style="list-style-type: none"> <li>▲ ASTM D4966 Martindale (heavy duty)</li> <li>☆ ASTM D3511 Pilling</li> <li>✱ AATCC 16 Light fastness</li> <li>☯ AATCC 8 or 116 Wet/dry crocking</li> <li>🔥 CA TB 117-2013</li> <li>🔥 ASTM E 84 Class 2</li> </ul>	<ul style="list-style-type: none"> <li>▲ ASTM D4157 Wyz abrasion (heavy duty)</li> <li>☆ ASTM D3511 Pilling</li> <li>✱ AATCC 16 Light fastness</li> <li>☯ AATCC 8 or 116 Wet/dry crocking</li> <li>🔥 CA TB 117-2013</li> <li>🔥 ASTM E 84 Class I</li> </ul>	<ul style="list-style-type: none"> <li>▲ ASTM D4157 Wyz abrasion (heavy duty)</li> <li>☆ ASTM D3511 Pilling</li> <li>✱ AATCC 16 Light fastness</li> <li>☯ AATCC 8 or 116 Wet/dry crocking</li> <li>🔥 CA TB 117-2013</li> <li>🔥 ASTM E 84 Class 1</li> </ul>
<b>Environment</b>	OEKO-TEX® STANDARD 100 EU Ecolabel	OEKO-TEX® STANDARD 100 EU Ecolabel	OEKO-TEX® STANDARD 100 EU Ecolabel

Fabrics available and ready to ship EXworks Grand Rapids, MI  
 Full colour scales available on [www.gabriel fabrics.com](http://www.gabriel fabrics.com)  
 Will pass other global standards  
 Subject to changes and colour differences

**ecolution design™**

North American HQ  
 2547 3 Mile Rd NW STE F  
 Grand Rapids, MI 49534  
 Sales: (616) 281-5559  
 Email: [info@ecolutiondesign.com](mailto:info@ecolutiondesign.com)  
[www.ecolutiondesign.com](http://www.ecolutiondesign.com)

**Gabriel®**

Gabriel North America  
 560 5th St. NW, Suite 210  
 Grand Rapids, MI 49504, USA  
 +1 616 202 5770  
[mailUS@gabriel.dk](mailto:mailUS@gabriel.dk)  
[www.gabriel fabrics.com](http://www.gabriel fabrics.com)