

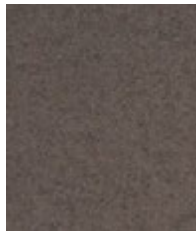
# Acoustic and Sofa Textiles

---

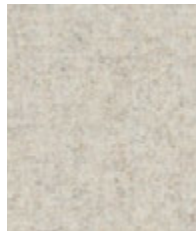
ecolution design™



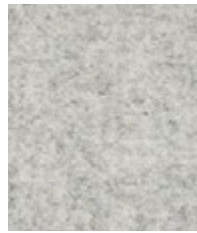
**camira**



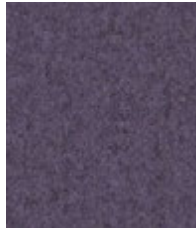
**Trevelyan**  
CUZ31



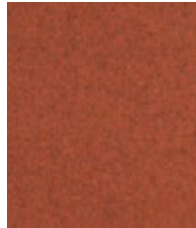
**Dartmouth**  
CUZ2Q



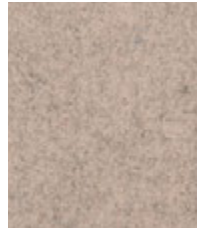
**Silverdale**  
CUZ28



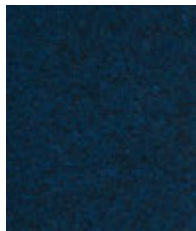
**Chichester**  
CUZ4C



**Warwick**  
CUZ4L



**St Andrews**  
CUZ86



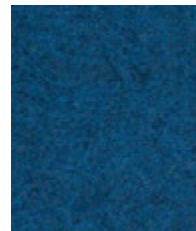
**Glenalmond**  
CUZ62



**Edinburgh**  
CUZ1Y



**Oxford**  
CUZ09



**Newcastle**  
CUZ1W



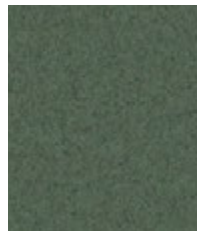
**Plymouth**  
CUZ1R



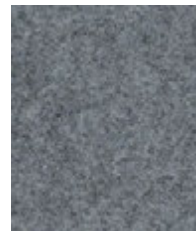
**Grantham**  
CUZ4E



**Cardiff**  
CUZ1N



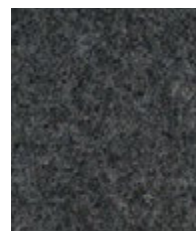
**Stowe**  
CUZ3R



**Aberlour**  
CUZ1J



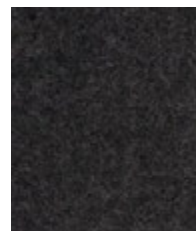
**Surrey**  
CUZ1E



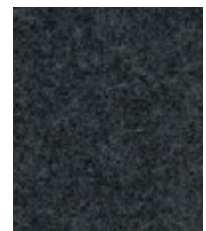
**Silcoates**  
CUZ30



**Stonebridge**  
CUZ4W



**Kingsmead**  
CUZ67



**Bromsgrove**  
CUZ35

Visit [www.camirafabrics.com](http://www.camirafabrics.com) to view the full range of colors available in each pattern.  
Photographic fabric scans are not color accurate. Always request actual fabric samples before ordering.



**Tag**  
LDS33



**Combo**  
LDS77



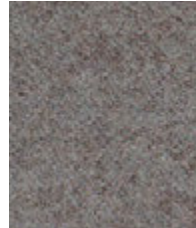
**Affix**  
LDS32



**Process**  
LDS88



**Wed**  
LDS34



**Chemistry**  
LDS35



**Intertwine**  
LDS42



**Accord**  
LDS60



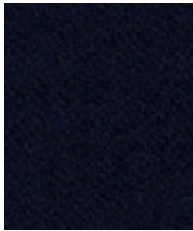
**Group**  
LDS59



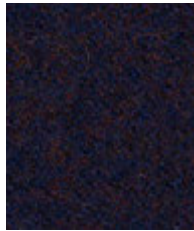
**Family**  
LDS58



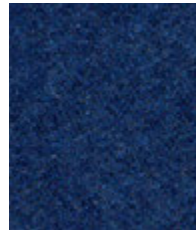
**Kinship**  
LDS56



**Sync**  
LDS69



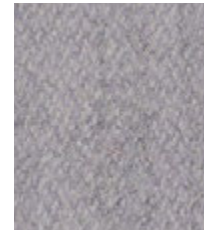
**Assemble**  
LDS61



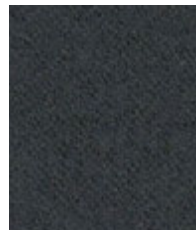
**Alike**  
LDS62



**Collaborate**  
LDS68



**Venture**  
LDS05



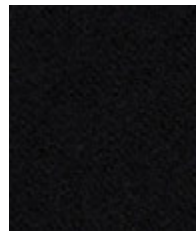
**Compound**  
LDS25



**Mix**  
LDS17



**Serendipity**  
LDS08



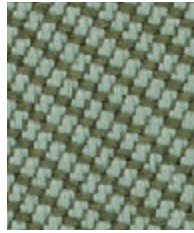
**Seek**  
LDS27



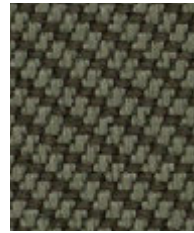
**Partner**  
LDS16



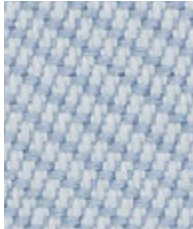
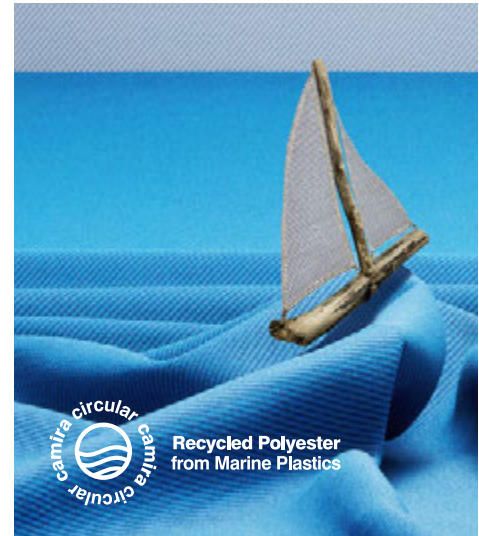
**Paddle**  
OOC13



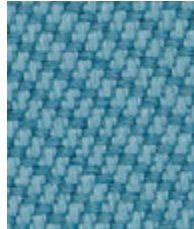
**Rockweed**  
OOC24



**Nori**  
OOC19



**Gulf**  
OOC15



**Jetsam**  
OOC02



**Cove**  
OOC22



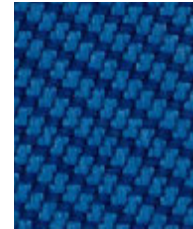
**Riptide**  
OOC14



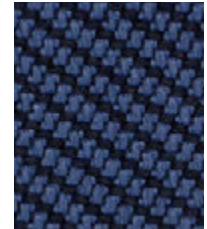
**Seaspray**  
OOC21



**Neptune**  
OOC11



**Atoll**  
OOC06



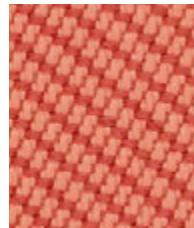
**Tidal**  
OOC26



**Seafarer**  
OOC16



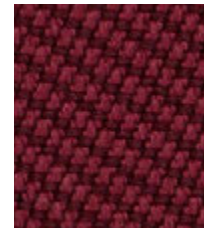
**Starfish**  
OOC27



**Coral**  
OOC05



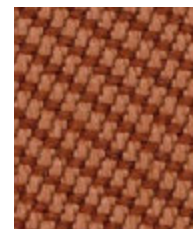
**Aquatic**  
OOC12



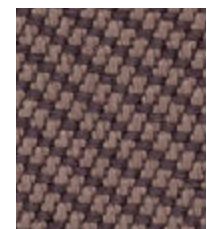
**Rosita**  
OOC29



**Scallop**  
OOC23



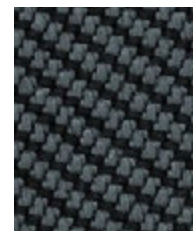
**Buoy**  
OOC25



**Shore**  
OOC09



**Bay**  
OOC08

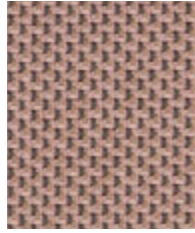


**Gannet**  
OOC20

Visit [www.camirafabrics.com](http://www.camirafabrics.com) to view the full range of colors available in each pattern. Photographic fabric scans are not color accurate. Always request actual fabric samples before ordering.



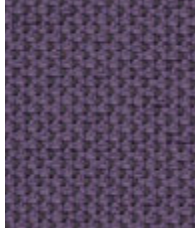
**Roll**  
ZER18



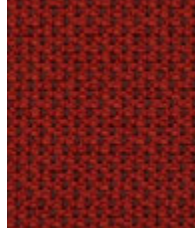
**Pull**  
ZER15



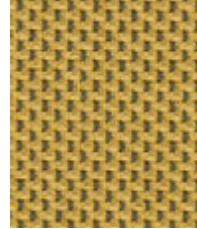
**Hop**  
ZER14



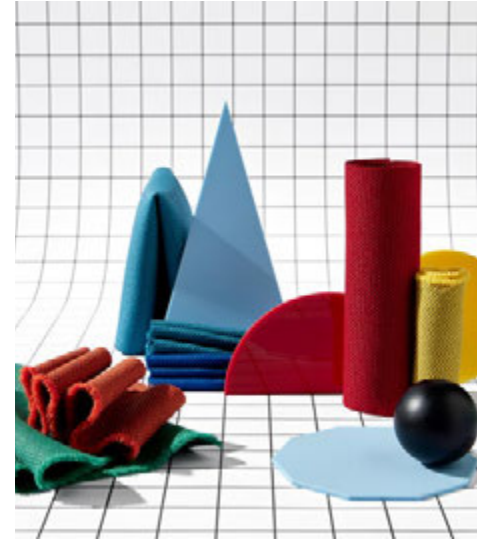
**Throw**  
ZER31



**Move**  
ZER21



**Lift**  
ZER17



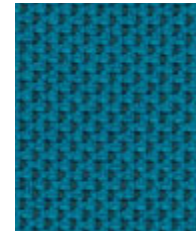
**Freestyle**  
ZER11



**Cheer**  
ZER08



**Handstand**  
ZER09



**Flip**  
ZER06



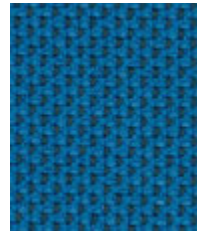
**Flex**  
ZER01



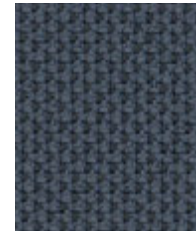
**Athletic**  
ZER03



**Agile**  
ZER02



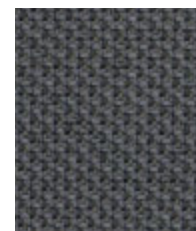
**Run**  
ZER04



**Dance**  
ZER30



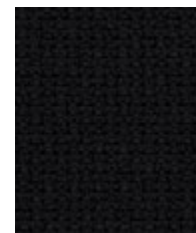
**Sport**  
ZER27



**Twirl**  
ZER29



**Bounce**  
ZER26

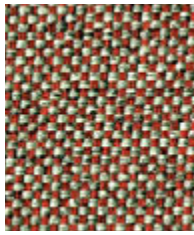


**Climb**  
ZER33

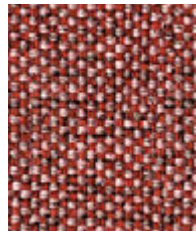


**Skip**  
ZER13

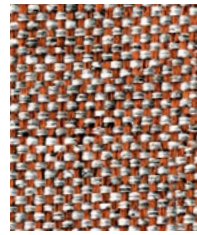
Visit [www.camirafabrics.com](http://www.camirafabrics.com) to view the full range of colors available in each pattern.  
Photographic fabric scans are not color accurate. Always request actual fabric samples before ordering.



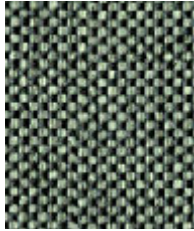
**Abraid**  
EGL13



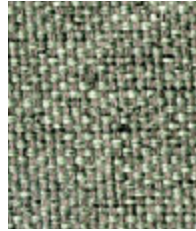
**Forge**  
EGL12



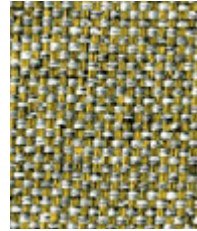
**Molten**  
EGL09



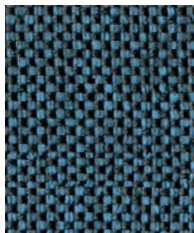
**Hemlock**  
EGL34



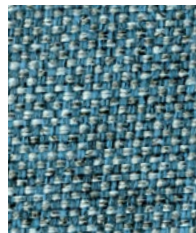
**Ferrous**  
EGL15



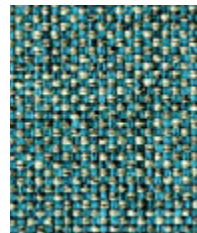
**Alloy**  
EGL05



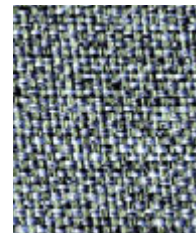
**Lagoon**  
EGL35



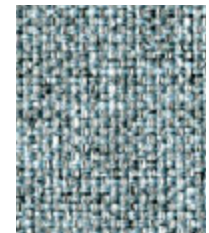
**Quench**  
EGL23



**Verdigris**  
EGL21



**Tensile**  
EGL20



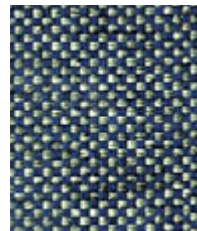
**Prime**  
EGL16



**Crucible**  
EGL24



**Grey Brindle**  
EGL50



**Hammer**  
EGL27



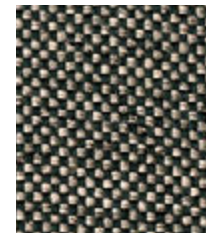
**Deep Clay**  
EGL32



**Galvanise**  
EGL26



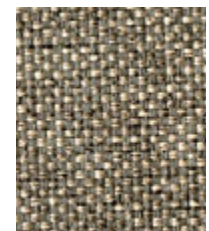
**Charcoal**  
EGL37



**Twig**  
EGL49



**Otter**  
EGL36

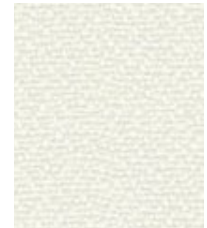


**Cast**  
EGL25

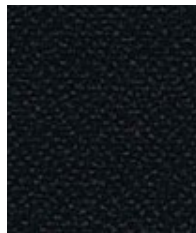
Visit [www.camirafabrics.com](http://www.camirafabrics.com) to view the full range of colors available in each pattern.  
Photographic fabric scans are not color accurate. Always request actual fabric samples before ordering.



**Aruba**  
YB093



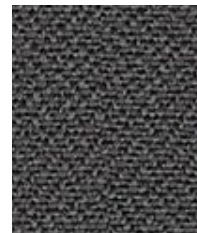
**Adobo**  
YB165



**Havana**  
YB009



**Paseo**  
YB019



**Blizzard**  
YB108



**Slip**  
YB094



**Rum**  
YB086



**Calypso**  
YB106



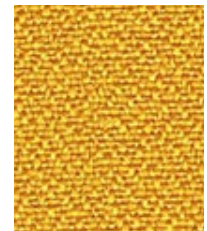
**Belize**  
YB105



**Lobster**  
YB087



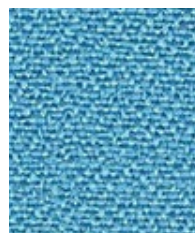
**Tortuga**  
YB168



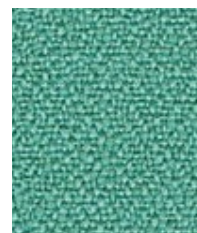
**Solano**  
YB088



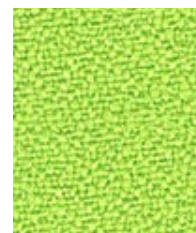
**Scuba**  
YB089



**Marianna**  
YB157



**Campeche**  
YB301



**Madura**  
YB156



**Apple**  
YB096

Acoustically transparent 100% textile-to-textile fabric with excellent sound properties. The eco-friendly choice for panel and acoustic applications.

# Blazer

## Composition

100% Pure New Wool

## Environmental

Certified to the EU Ecolabel  
Certified to Indoor Advantage™ Gold  
Environmental Product Declaration - Natural fabric  
AB 2998 Compliant  
Prop 65 Compliant  
PFAS Free  
Non metallic dyestuffs

## Width

54 inches minimum

## Abrasion Resistance\*

ASTM D4157 Wyzenbeek method  
Heavy Duty Upholstery independently certified to ≥75,000 double rubs. Covered by a full and comprehensive 10 year guarantee (full details available)

## Flammability

California Technical Bulletin 117  
UFAC Class 1  
BS 7176 Low Hazard  
ASTM E84 Class 1 or A (Adhered)  
ASTM E84 Class 1 or A (Un-adhered)  
IMO FTP Code (Part 8)

### Optional, please specify when ordering:

NFPA 701 when FR treated (Z)  
BS 7176 Medium Hazard when FR treated (Z)

*Note: Flammability performance is dependent on components used.*

## Cleaning code

W/S

Clean with water-based cleaning agent or solvent:  
Depending on the stain, you can use a dry-cleaning solvent, the foam of a mild detergent, or upholstery shampoo.

# RePlay Zero

## Composition

100% Post-Consumer Recycled Polyester

## Environmental

Certified to the EU Ecolabel  
Certified to Standard 100 by OEKO-TEX®  
Certified to Indoor Advantage™ Gold  
AB 2998 Compliant  
Prop 65 Compliant  
PFAS Free  
Made from 100% post-consumer recycled polyester

## Width

54 inches minimum

## Abrasion Resistance\*

ASTM D4157 Wyzenbeek method  
Heavy Duty Upholstery independently certified to ≥100,000 double rubs  
Covered by a full and comprehensive 10 year guarantee (full details available)

## Flammability

California Technical Bulletin 117  
NFPA 260 + UFAC Class 1  
BS 7176 Low Hazard  
ASTM E84 Class 2 or B (Adhered)  
ASTM E84 Class 1 or A (Un-adhered)  
**Optional:** Please specify when ordering:  
NFPA 701 when FR treated (Gorts)

*Note: Flammability performance is dependent on components used.*

## Cleaning code

W/S Vacuum regularly. Wipe with a damp cloth using a proprietary upholstery shampoo/soap. For deeper cleaning use steam, bleach, alcohol or professionally dry clean. Can be washed at 140F. Full details can be found in our cleaning and disinfection guide.

# Lucia T2T

## Composition

100% Textile to Textile Recycled Polyester

## Environmental

Certified to the EU Ecolabel  
Certified to Standard 100 by OEKO-TEX®  
Certified to Indoor Advantage™ Gold  
AB 2998 Compliant  
Prop 65 Compliant  
PFAS Free  
Non metallic dyestuffs

## Width

66 inches minimum

## Flammability

BS 7176 Low Hazard  
ASTM E84 Class 1 or A (Adhered)  
ASTM E84 Class 1 or A (Un-adhered)  
*Note: Flammability performance is dependent on components used.*

## Cleaning code

W/S Vacuum regularly. Wipe with a damp cloth using a proprietary upholstery shampoo/soap. For deeper cleaning use steam, bleach, alcohol or professionally dry clean. Can be washed at 140F. Full details can be found in our cleaning and disinfection guide.

# Rivet

## Composition

100% Post-Consumer Recycled Polyester

## Environmental

Certified to the EU Ecolabel  
Certified to Indoor Advantage™ Gold  
Environmental Product Declaration - Synthetic fabric  
AB 2998 Compliant  
Prop 65 Compliant  
PFAS Free  
Made from 100% post-consumer recycled polyester

## Width

54 inches minimum

## Abrasion Resistance\*

ASTM D4157 Wyzenbeek method  
Heavy Duty Upholstery independently certified to ≥50,000 double rubs  
Covered by a full and comprehensive 10 year guarantee (full details available)

## Flammability

California Technical Bulletin 117  
UFAC Class 1  
BS 7176 Low Hazard  
ASTM E84 Class 2 or B (Adhered)  
ASTM E84 Class 1 or A (Un-adhered)  
UL 723  
**Optional:** Please specify when ordering:  
NFPA 701 when FR treated (Gorts)  
*Note: Flammability performance is dependent on components used.*

## Cleaning code

W/S Vacuum regularly. Wipe with a damp cloth using a proprietary upholstery shampoo/soap. For deeper cleaning use steam, bleach, alcohol or professionally dry clean. Can be washed at 140 F. Full details can be found in our cleaning and disinfection guide.

# Oceanic

## Composition

100% Post-Consumer Recycled Polyester, including 50% SEAQUAL® YARN

## Environmental

Certified to the EU Ecolabel  
Certified to Standard 100 by OEKO-TEX®  
Certified to Indoor Advantage™ Gold  
Environmental Product Declaration - Synthetic fabric composition  
AB 2998 Compliant  
Prop 65 Compliant  
PFAS Free  
Made from 100% post-consumer recycled polyester  
Non metallic dyestuffs

## Width

54 inches minimum

## Abrasion Resistance\*

ASTM D4157 Wyzenbeek method  
Heavy Duty Upholstery independently certified to ≥100,000 double rubs  
Covered by a full and comprehensive 10 year guarantee (full details available)

## Flammability

California Technical Bulletin 117  
BS 7176 Low Hazard  
ASTM E84 Class 1 or A (Un-adhered)  
**Optional:** Please specify when ordering:  
NFPA 701 when FR treated (Gorts)  
*Note: Flammability performance is dependent on components used.*

## Cleaning code

W/S Vacuum regularly. Wipe with a damp cloth using a proprietary upholstery shampoo/soap. For deeper cleaning use steam, bleach, alcohol or professionally dry clean. Can be washed at 140F. Full details can be found in our cleaning and disinfection guide.

# Synergy

## Composition

95% Pure New Wool, 5% Nylon

## Environmental

Certified to the EU Ecolabel  
Certified to Indoor Advantage™ Gold  
Environmental Product Declaration - Natural fabric  
AB 2998 Compliant  
Prop 65 Compliant  
PFAS Free

## Width

54 inches minimum

## Abrasion Resistance\*

D4966 Martindale method, Heavy Duty Upholstery.  
Independently certified to ≥100,000 cycles. Covered by a full and comprehensive 10 year guarantee (full details available).

## Flammability

California Technical Bulletin 117  
BS 7176 Low Hazard  
ASTM E84 Class 2 or B (Adhered)  
ASTM E84 Class 2 or B (Un-adhered)  
IMO FTP Code (Part 8)  
**Optional:** Please specify when ordering:  
BS 7176 Medium Hazard when FR treated (Z)  
ASTM E84 Class 1 or A (Adhered) when FR treated (Z)  
NFPA 701 when FR treated (Z)  
*Note: Flammability performance is dependent on components used.*

## Cleaning code

W/S  
Clean with water-based cleaning agent or solvent:  
Depending on the stain, you can use a dry-cleaning solvent, the foam of a mild detergent, or upholstery shampoo.

\*Abrasion test results exceeding ACT performance Guidelines are not an indicator of product lifespan. Multiple factors affect fabric durability and appearance retention. We're confident in the durability of our products so we provide a robust 10 year guarantee (full details available). This product is externally certified, details of which are on our website and available from our customer services team. Batch to batch variations in shade may occur within commercial tolerances. We reserve the right to alter technical specifications without notice. The Unregistered Design Rights and the Copyright in all designs are the exclusive property of Camira Fabrics Limited. The stated technical and environmental performance of a fabric may be affected by the post treatment applied. Product guarantees for the post treatment of fabrics undertaken by Camira are guaranteed for 5 years.

# camira

For additional information or sample requests visit: [www.camirafabrics.com](http://www.camirafabrics.com)  
Samples can also be requested by email at: [memos@camirafabrics.com](mailto:memos@camirafabrics.com)



Note: Lucia T2T does not meet the ACT abrasion criteria